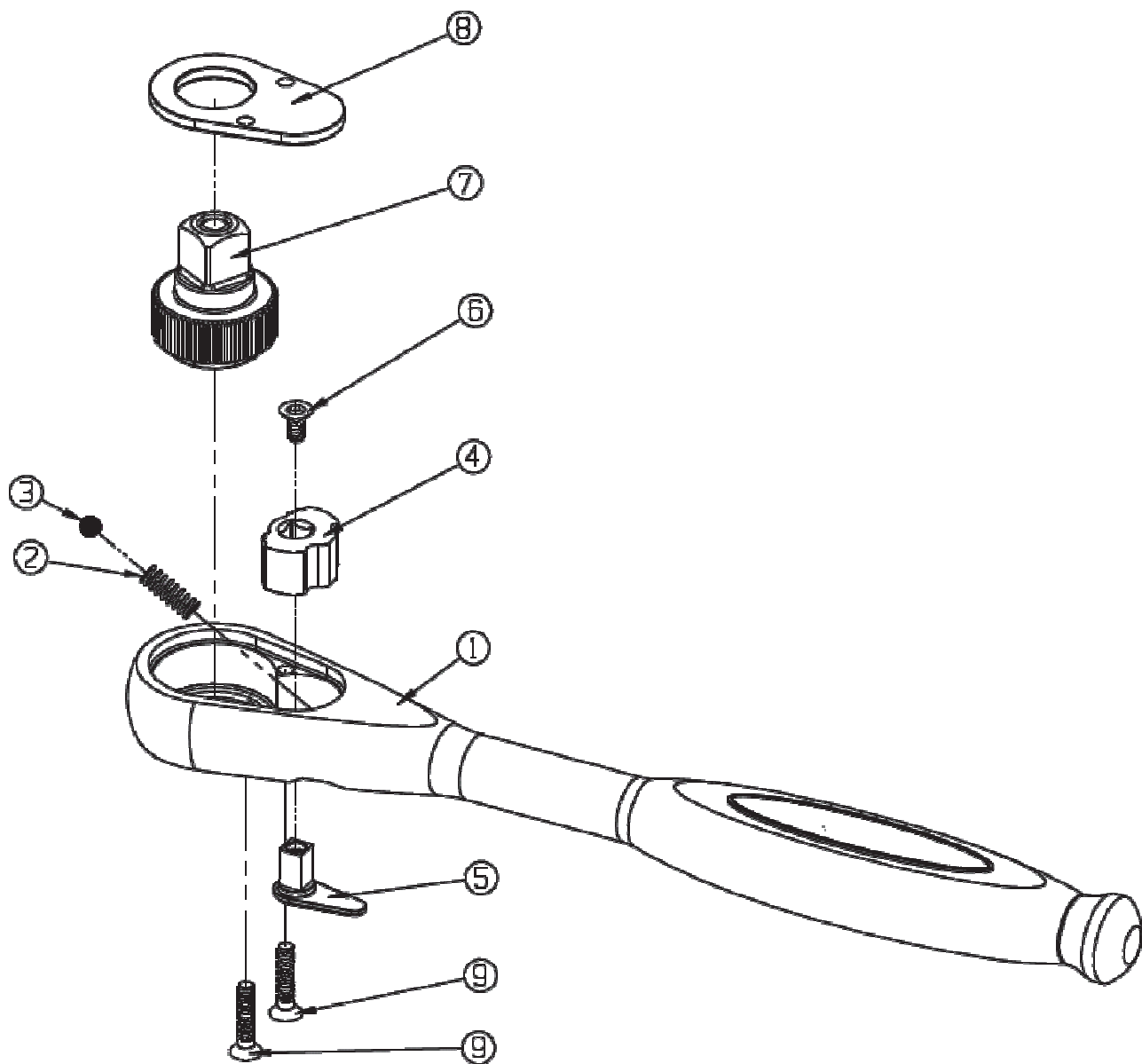


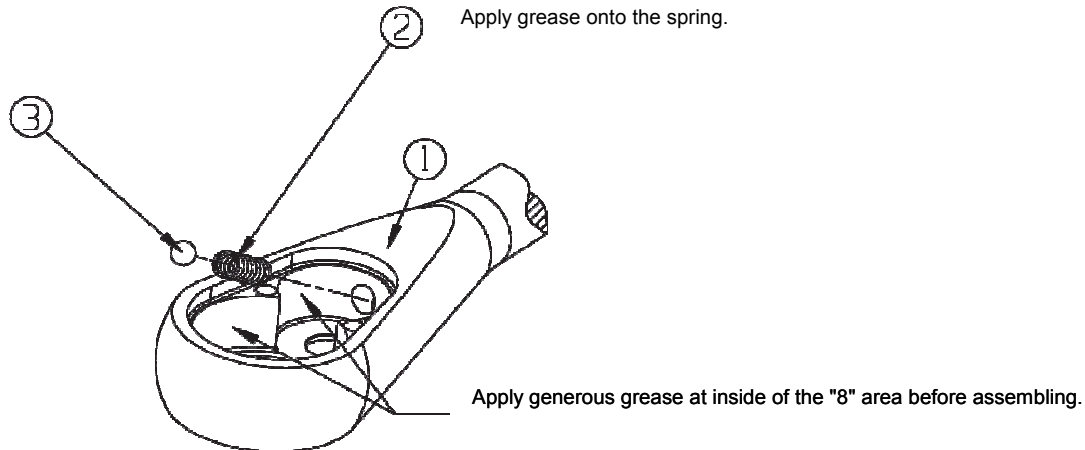
# Assembly Instructions All Ratchets

Num	Part Name	Q'ty
1	Handle	1
2	Spring	1
3	Steel Ball	1
4	Pawl	1
5	Reverse Switch	1
6	Screw	1
7	Quick Release	1
8	Cover Plate	1
9	Screw	2



## Follow the sequence for assembly.

### Step 1



#### Assembly order

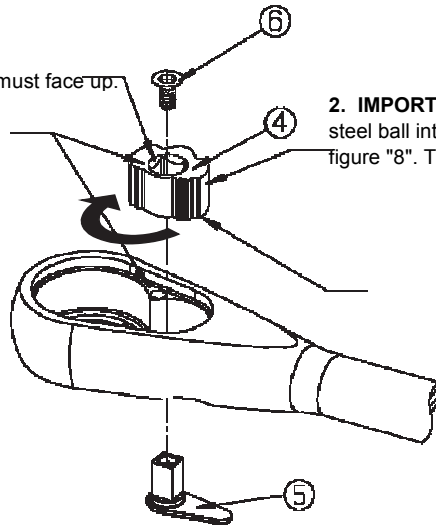
1. Apply a liberal amount of grease to the inside "8" area of handle.
2. Apply grease to ball end of spring (2)
3. Install the spring into the hole of handle grease facing out (1)
4. Place the steel ball on the top of spring (3)

#### Key Points:

- ※ Check to see that the steel ball and spring can be pressed into the hole smoothly without interference.
- ※ The grease should hold the steel ball to the end of the spring, if not reapply.

### Step 2

1. The chamfered middle hole of pawl must face up.



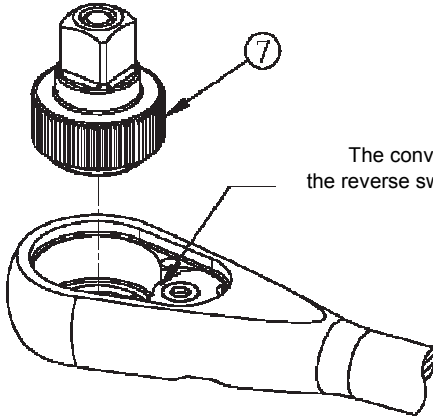
2. **IMPORTANT STEP:** Use the cambered side of pawl to press the steel ball into the hole first and then set the pawl into the cavity of figure "8". Then turn the pawl clockwise to unlock

3. Insert the square end of reverse switch into the square opening of pawl. (5)
4. Fasten the 10mm long screw into the reverse switch with 2.5mm hexagon key. (6)

#### Key Point:

- ※ Check the reverse switch if it can be moved to left and right without any difficulty after fastening the screw.

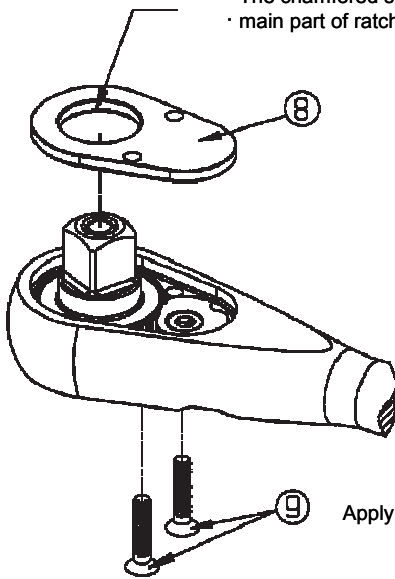
Step 3



The convex curve of pawl must be toward the top (bigger) cavity of figure "8" and the reverse switch must be set straight or centered while assembling the ratchet anvil unit.

1. Place the quick-release ratchet anvil unit into the main part of ratchet wrench

Step 4



The chamfered side of the cover plate's hole must face down toward the fillister/hollow of main part of ratchet wrench.

Apply thread adhesive on screws while fastening.

1. Place the cover plate onto the top of cavity of figure "8".
2. Fasten the 2 pieces of 20mm long screws into the holes of cover
3. Tighten with torque wrench to 3Nm,